



MARUMAN

Company Name Maruman Shokai Co., Ltd.
Address 3207-1 Kasahara-cho Tajimi,
Gifu 507-0901 JAPAN
Established 1957
Business OEM / ODM ceramic tile
Markets Japan / International



Explore
Our OEM / ODM Development

Japanese Tiles MARUMAN 2026

Index

About MARUMAN	2
SHAPES & SURFACES	3
COLORS & FINISHES	4
Hikkaki	5
Heko	6
Myo	7
Nagare	8
Tanto	9
Megumi S	11
Megumi M	12
Penny Round	13
Botan	14
Finger Mosaic	15
Shian	16
Flex	17
Mars	18
Koyohen	19
Koyohen Border	20
Washi	21
Kimono	22
Ayumi	23
Kumi	24
Kushu	25
Concave Border L	26
Tanoshi	27
Bouquet	28
Deco Wall Leaf	29
Butterfly	30
K-relief model	31
BR model No.731	32

About MARUMAN

Crafted with Care

Created to Inspire

Founded in 1957 in Tajimi, Japan, MARUMAN has built its reputation through deep expertise in ceramic materials and close collaboration with tile manufacturers across the country.

Working within one of Japan's historic ceramic regions, we combine traditional craftsmanship with advanced material knowledge to create tiles defined by depth, character, and natural variation.

Through our carefully managed production network, we support OEM and ODM development for partners worldwide. From material development and glaze design to custom colors, shapes, and surfaces, we offer flexible product creation backed by consistent Japanese quality.

Rooted in respect for materials and craftsmanship, our tiles embody the rich textures and authentic beauty created through traditional ceramic firing and artisanal glazing techniques.

Today, MARUMAN connects Japanese ceramic craftsmanship with global design—bringing unique surfaces and inspiring spaces to projects around the world.



100% MADE IN JAPAN

SHAPES & SURFACES

Explore the dimensional possibilities of ceramic design.

Presents a selection of forms, sizes, and textures that can be created through Maruman's ceramic manufacturing network.

Using techniques such as pressing, extrusion, and hand crafting, we can produce a wide range of tile geometries—from simple architectural shapes to distinctive textured surfaces.

Each form reflects the craftsmanship and technical expertise developed through decades of ceramic production in Japan.



COLORS & FINISHES

Discover the depth and character of Japanese glazing.

Showcases a variety of glaze colors and surface finishes available through Maruman.

Drawing on Japan's long tradition of ceramic glazing, we work closely with clients to develop custom colors, textures, and glaze expressions tailored to each project.

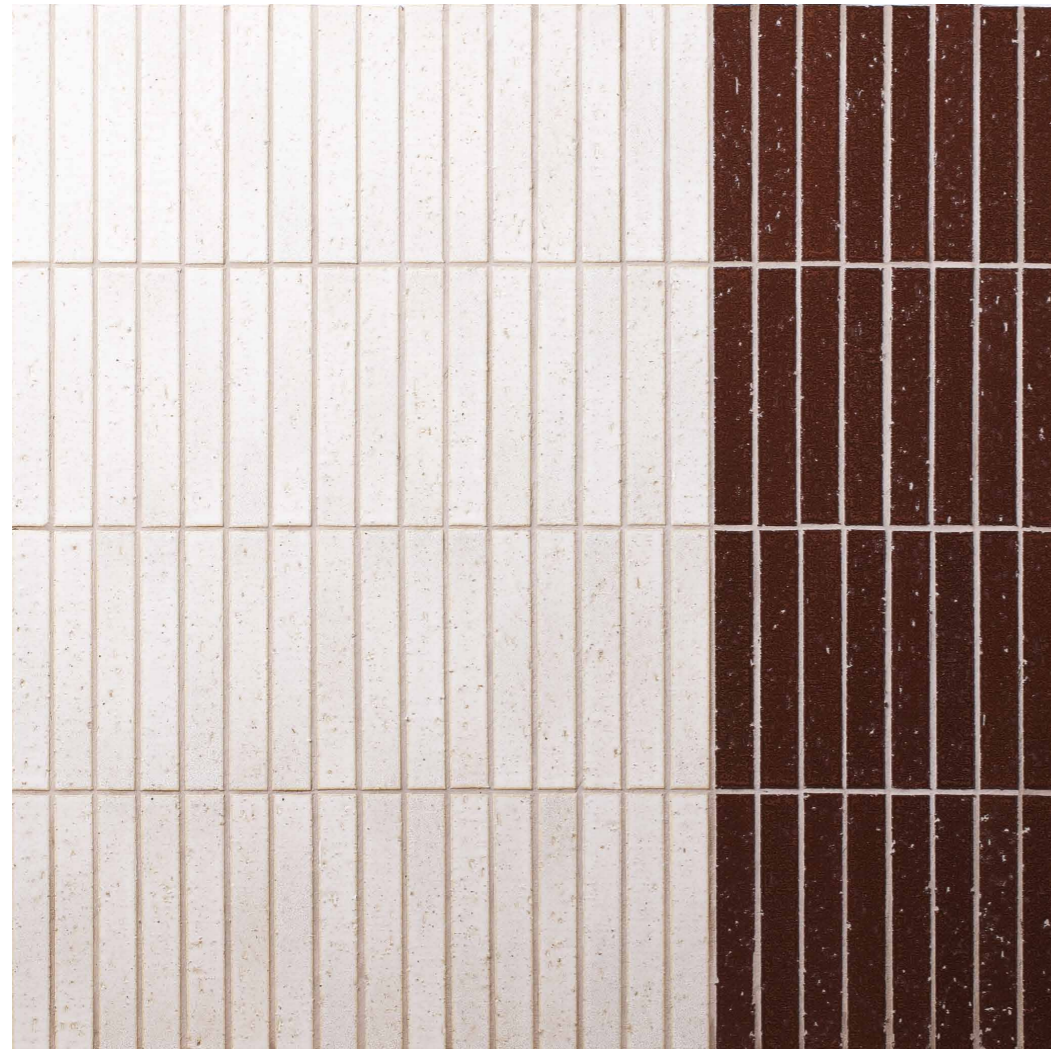
The result is a rich palette of tones and finishes that bring warmth, depth, and individuality to ceramic surfaces.



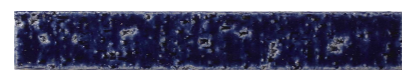
Hikkaki

1" x 6" (22x147mm)
12" x 12" (300x300mm)
1 sheet = 0.97sq.ft.
Glazed Stoneware
Made-to-Order

The extrusion production method HIKKAKI a pottery-like feel.
The rough surface adds bold depth and texture.
Each tile features a unique, tactile finish, giving every installation a special richness.



HIKK-1



HIKK-2



HIKK-3



HIKK-4

Heko

1-1/4" x 8" (32.5x200mm)
11-1/4" x 8" (288x203.5mm)
1 sheet = 0.64sq.ft.
Glazed Stoneware
Made-to-Order

Born from extrusion, HEKO offers a rich, authentic ceramic character. Warm glazes, inspired by earth and wood, reveal the true depth of Japanese glazing craftsmanship.



HEKO-1



HEKO-2

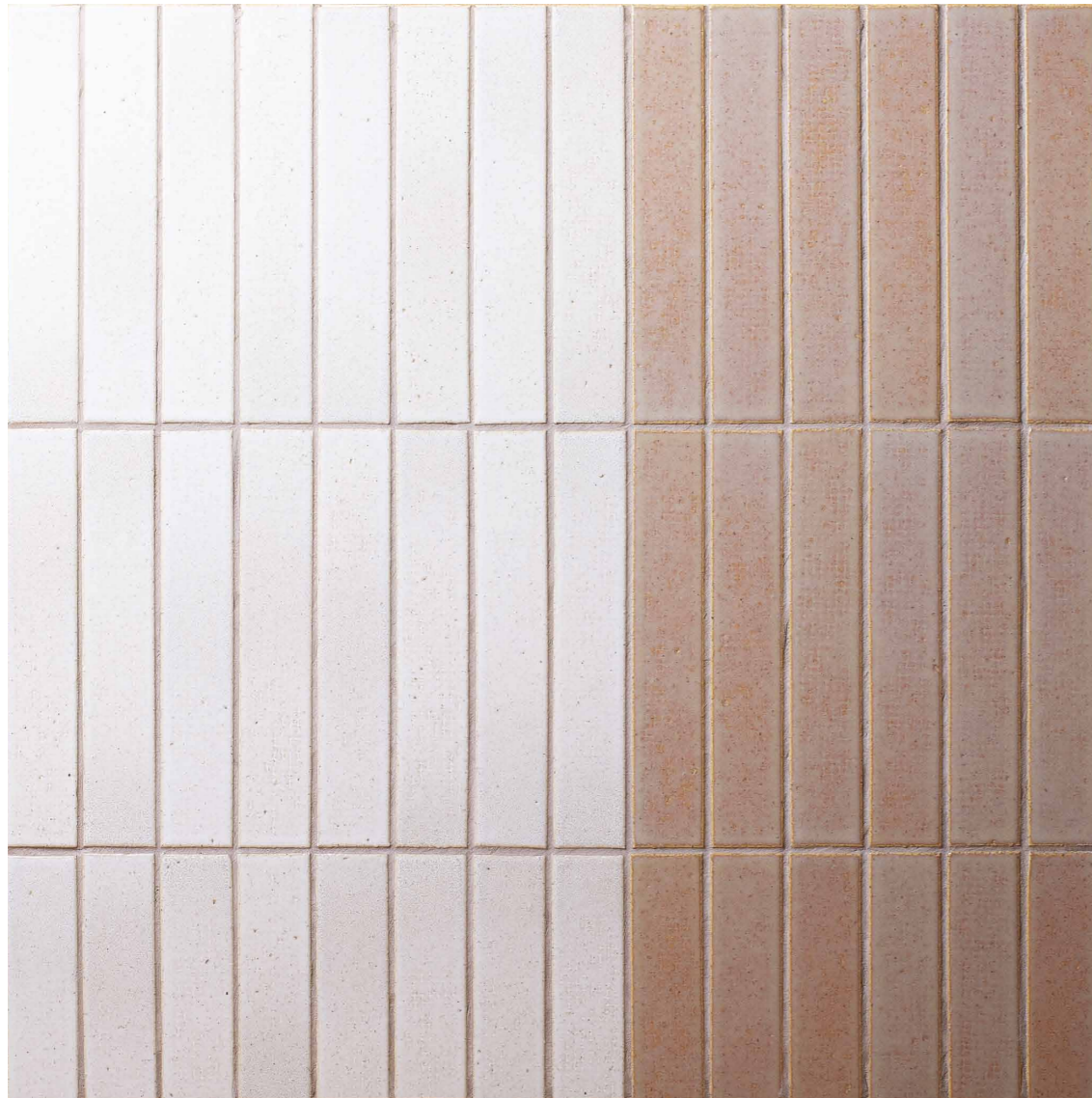


HEKO-3

Myo

1-1/2"x9" (40x227mm)
1 piece = 0.10sq.ft.
Glazed Stoneware
Made-to-Order

MYO is an extruded tile with the natural feel of hand-thrown pottery. Its subdued yet striking clay and glaze combination is a debut completely exclusive to Maruman.



MYO-1



MYO-2

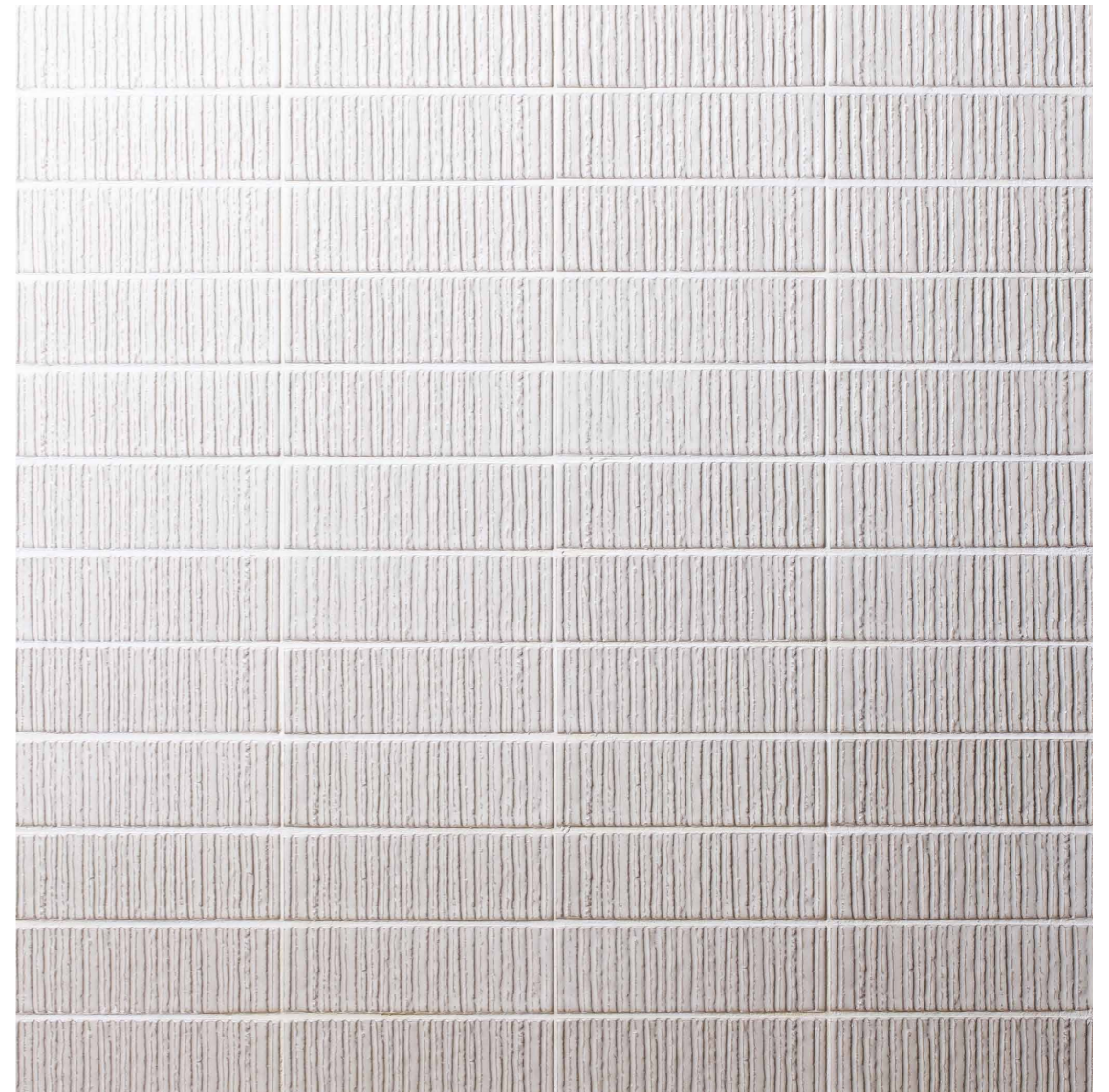


MYO-3

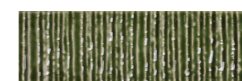
Nagare

2"x6" (48x149mm)
12"x12" (306x304mm)
1 sheet = 1.01sq.ft.
Glazed Porcelain
Made-to-Order

NAGARE's irregular striations reflect the look of cascading water. Textured clay and richly flowing glaze combines to create the soft, free-flowing lines of today's style.



NAGA-1



NAGA-2



NAGA-3



NAGA-4

Tanto

2-1/2"x2-1/2" (60x60mm)
10"x10" (252x252mm)
1 sheet = 0.69sq.ft.
Glazed / Unglazed Stoneware
Stocked in Japan

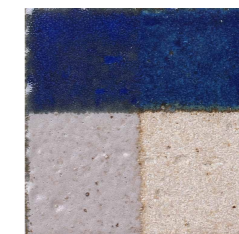
Named TANTO for "plenty", these rare 2-1/2" tiles masterfully combine glazed and unglazed clay. Hand-glazed by artisans with exceptional care, they allow for endless installation patterns.



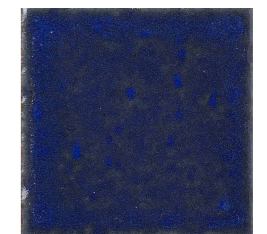
TNT-1



TNT-1B



TNT-2

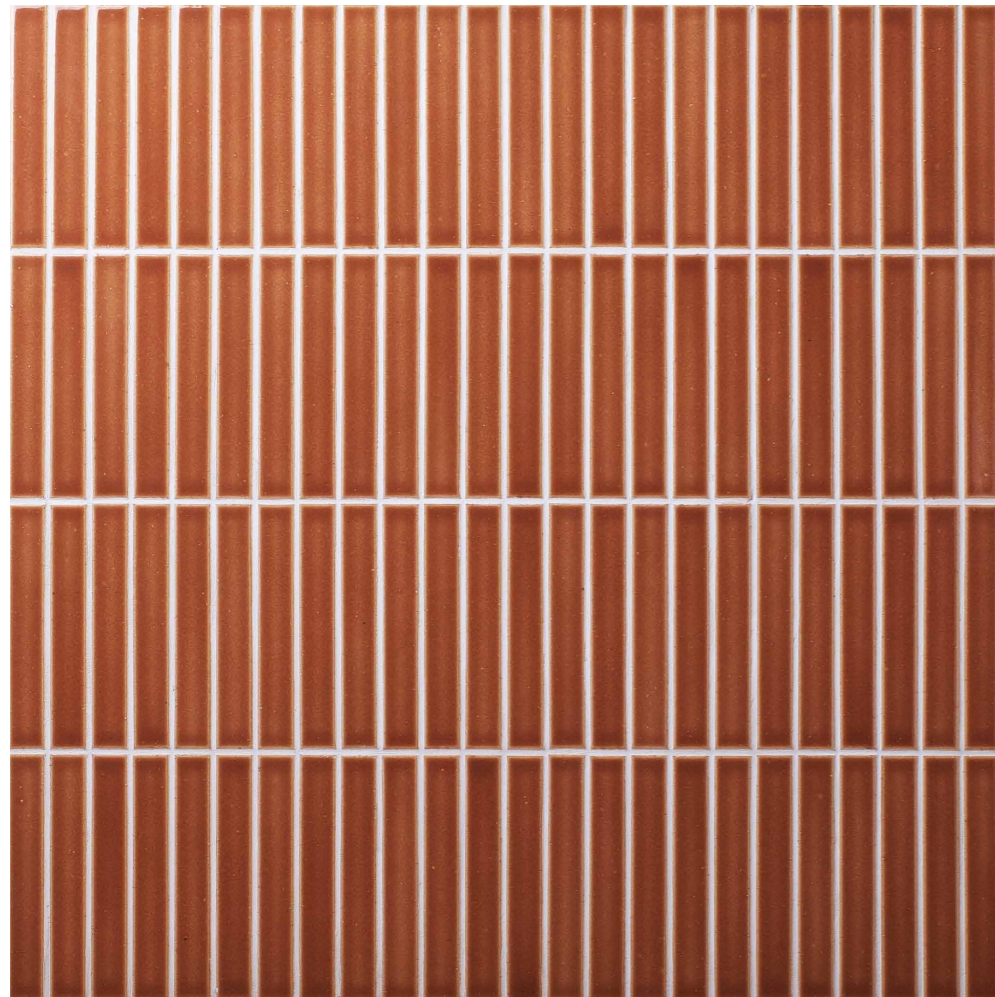


TNT-2B

Megumi S

1"x6" (22x147mm)
12"x12" (300x300mm)
1 sheet = 0.97sq.ft.
Glazed Porcelain
Made-to-Order

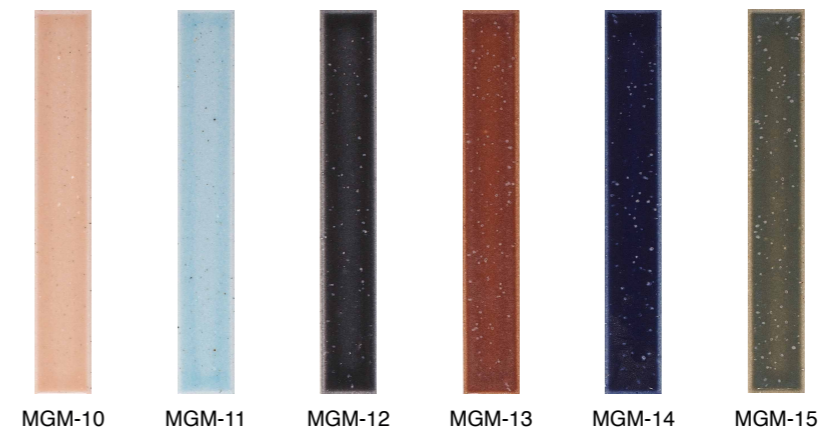
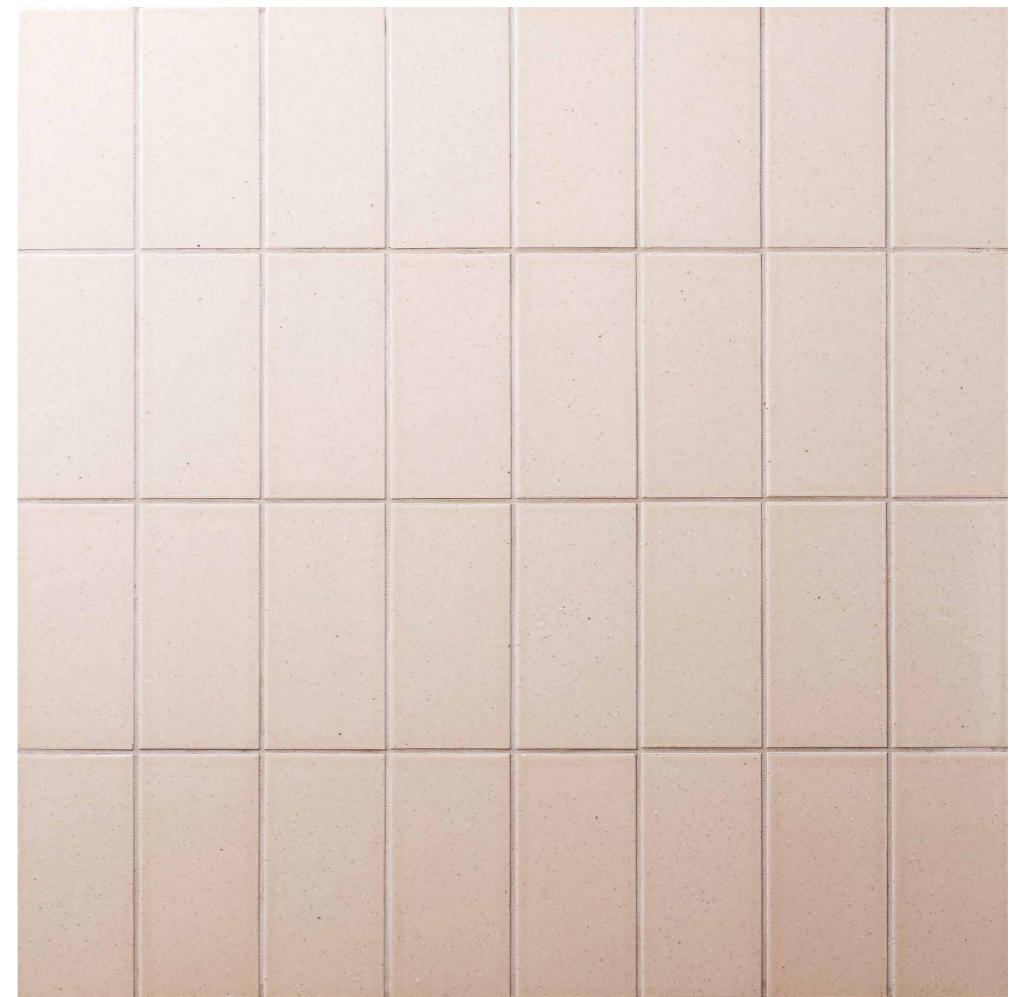
Born from traditional Japanese techniques, MEGUMI S offers warm, fine-grain finishes created by unique glazes and kiln variations. This versatile "KitKat" shape is in high demand.



Megumi M

3"x6" (72x147mm)
1 piece = 0.12sq.ft.
Glazed Porcelain
Made-to-Order

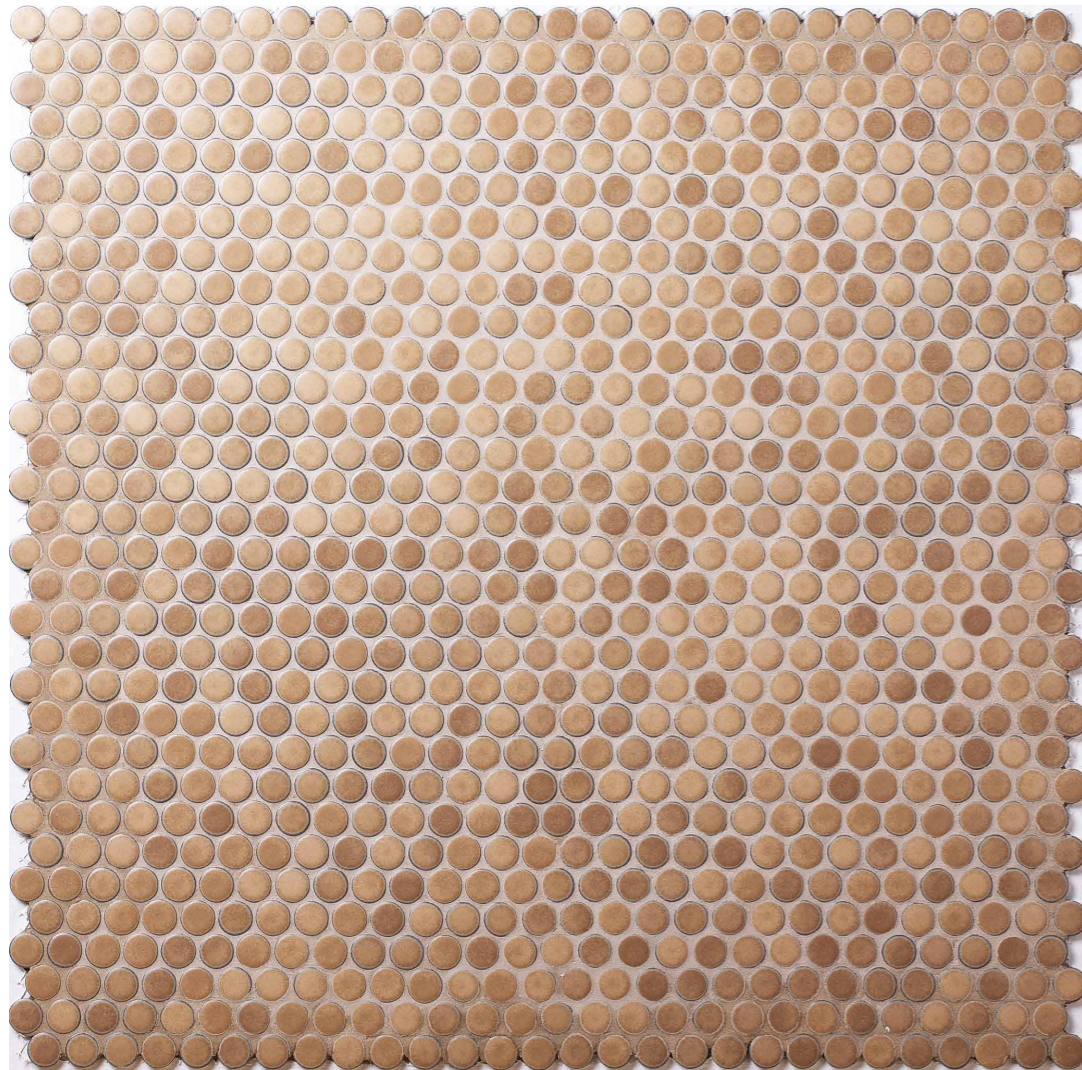
A subway-sized version of our popular Megumi S, MEGUMI M features traditional Japanese glazing. Its subtle textures and artistic tones arise from unique glaze and kiln variations.



Penny Round

3/4" Round (19mm)
11-1/2" x 11-1/2" (292 x 295mm)
1 sheet = 0.93sq.ft.
Glazed Porcelain
Made-to-Order

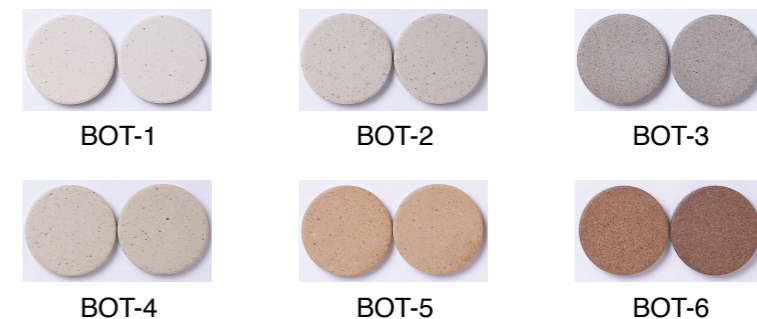
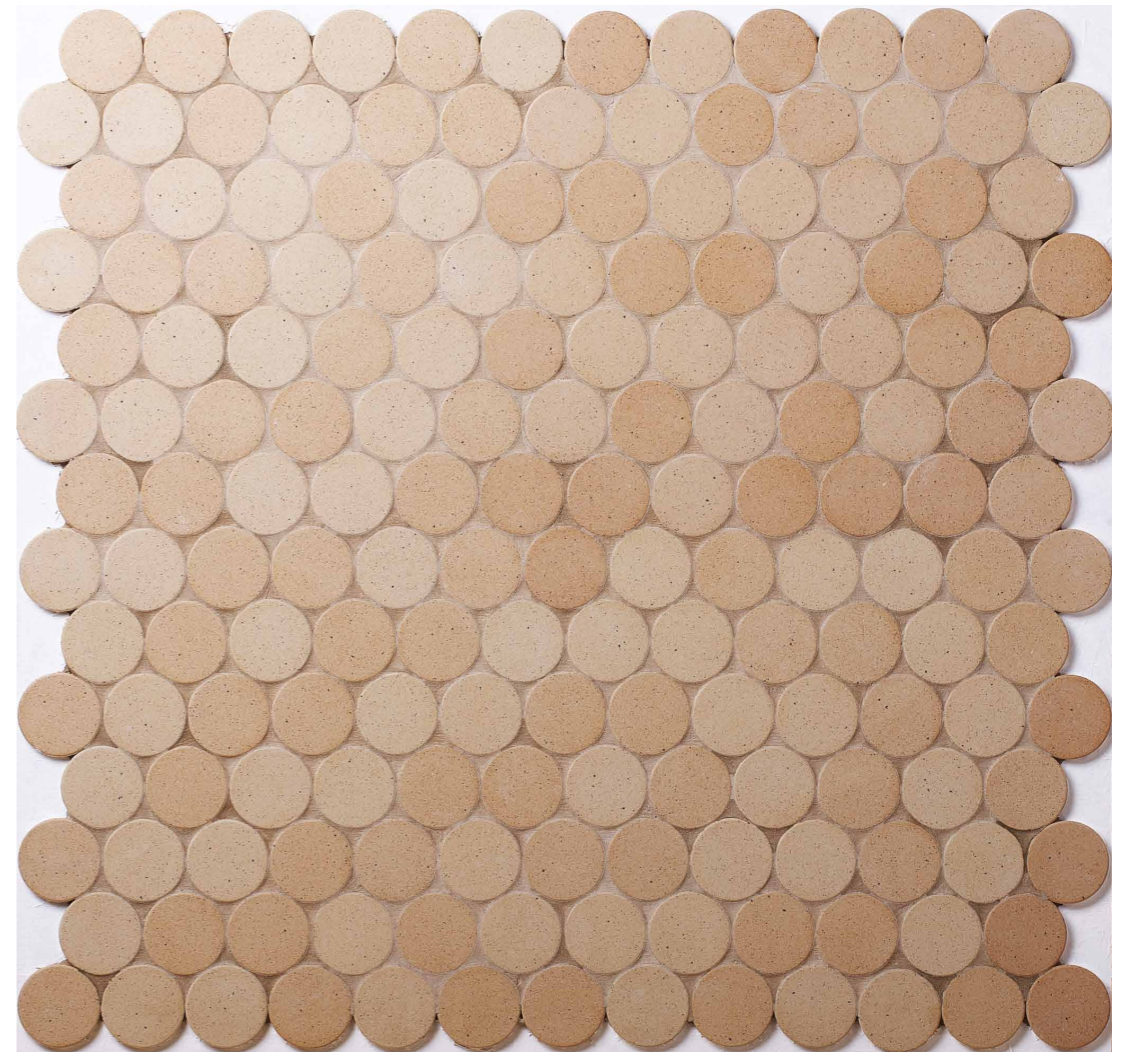
While classic in shape, PENNY ROUND features Maruman's new earthy, white, green and blue hues. Unique Japanese firing creates subtle shading, giving the tile a trendy and current feel.



Botan

1-3/4" Round (45mm)
11-1/4" x 11" (287 x 278mm)
1 sheet = 0.86sq.ft.
Unglazed Porcelain
Made-to-Order

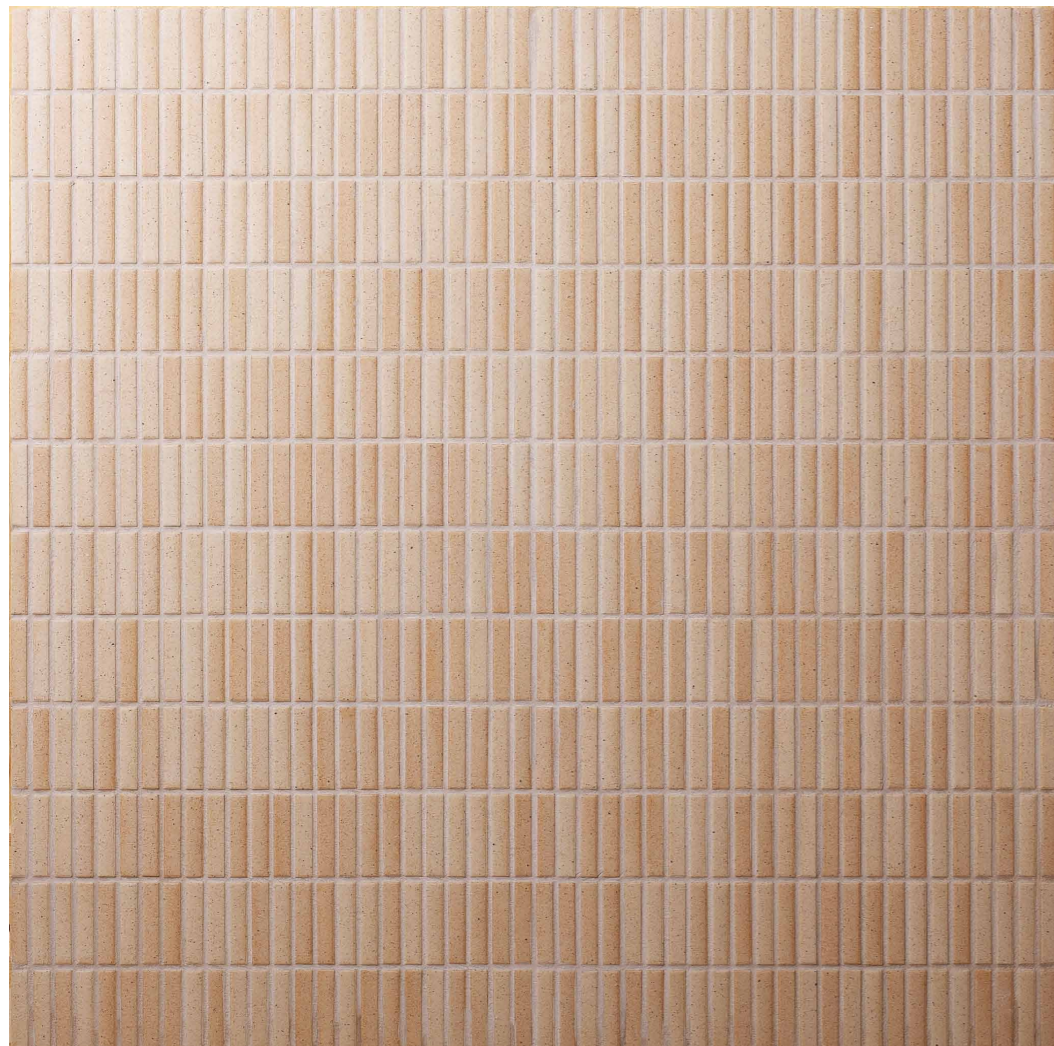
BOTAN offers warm tones of earth and wood. As an unglazed tile, the natural character of its chosen clay beautifully shows through. Highly slip-resistant, it is ideal for floors.



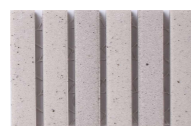
Finger Mosaic

3/8" x 2" (9.5x47mm)
 12" x 12" (300x300mm)
 1 sheet = 0.97sq.ft.
 Unglazed Porcelain
 Made-to-Order

FINGER MOSAIC's earthy tones and rough texture add a natural ambiance. Because it is unglazed, the clay's warm character is clearly visible. Slip-resistant and versatile, it suits any space.



FM-1



FM-2



FM-3



FM-4



FM-5



FM-6

Shian

2" x 4" (14.6x97+29.2x97mm)
 12" x 12" (300x300mm)
 1 sheet = 0.97sq.ft.
 Unglazed Porcelain
 Prototype

SHIAN is an entirely new Maruman prototype. Its uneven surface and casual random patterns beautifully evoke a sense of wabi-sabi. Shown unglazed, custom glazes are available.



SHIA-1



SHIA-2



SHIA-3



SHIA-4



SHIA-5

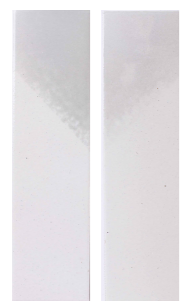
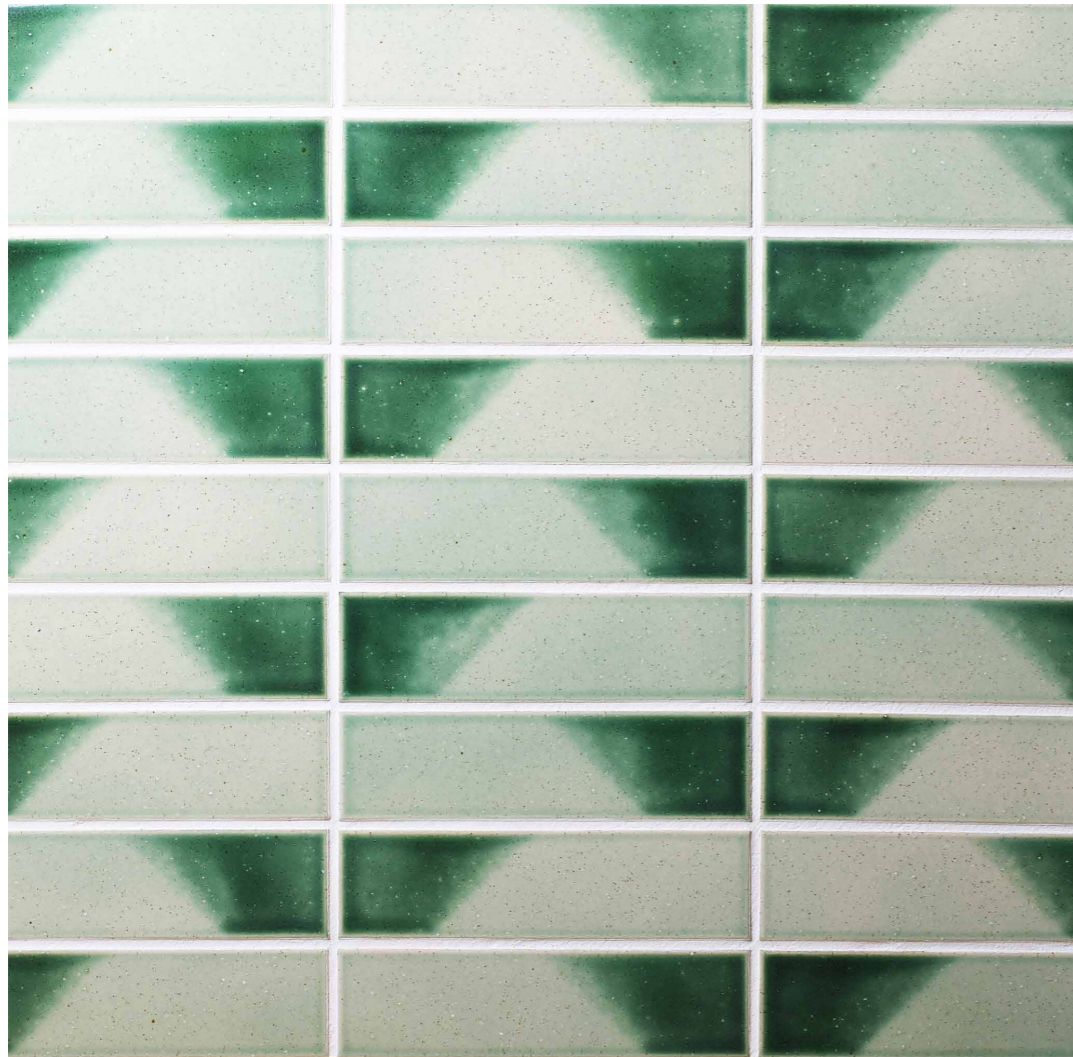


SHIA-6

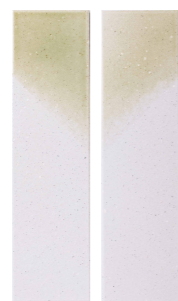
Flex

2-1/2"x9" (60x227mm)
1 piece = 0.15sq.ft.
Glazed Porcelain
Made-to-Order

With a soft diagonal, two-color glaze design, FLEX creates endless geometric patterns. Available in four colors, this dynamic tile invites limitless custom color combinations.



FLEX-1L FLEX-1R



FLEX-2L FLEX-2R



FLEX-3L FLEX-3R



FLEX-4L FLEX-4R

Mars

2-1/2"x9" (60x227mm)
1 piece = 0.15sq.ft.
Glazed Porcelain
Stocked in Japan

MARS, an otherworldly undulated tile, boasts a pleasing visual and tactile surface. Its extraterrestrial colors blend seamlessly with understated wabi-sabi and rich glaze tones.



MRS-1



MRS-3

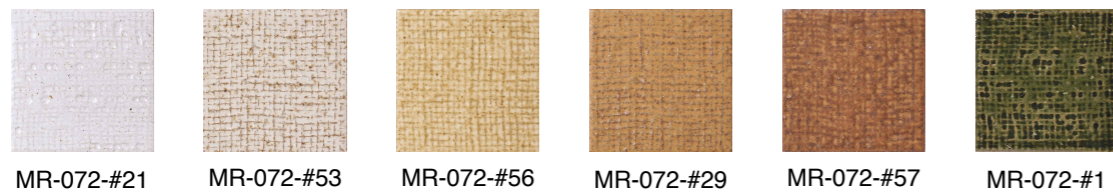


MRS-4

Koyohen

KOYOHEN's petite square design beautifully portrays the irregular pattern of linen cloth, capturing the true wabi-sabi essence of time-treasured traditional Japanese textiles.

2-3/4" x 2-3/4" (69x69mm)
 11-1/4" x 11-1/4" (288x288mm)
 1 sheet = 0.90sq.ft.
 Glazed Porcelain
 Stocked in Japan

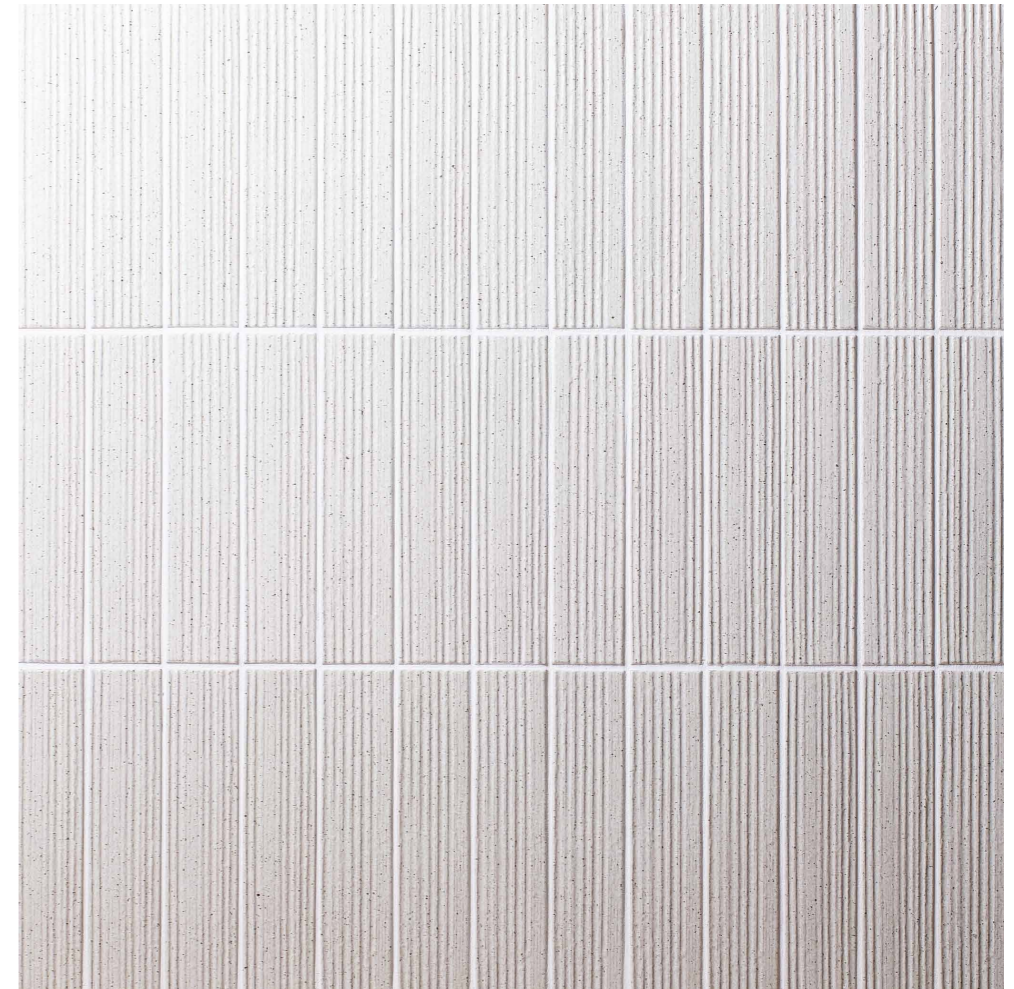


MR-072-#21 MR-072-#53 MR-072-#56 MR-072-#29 MR-072-#57 MR-072-#1

Koyohen Border

KOYOHEN BORDER's irregular grooved texture conveys a true feeling of wabi-sabi, the essence of Japanese culture. It is offered in multiple natural colors.

1-3/4" x 7-1/2" (42x192mm)
 5-3/4" x 14-1/4" (195x360mm)
 1 sheet = 0.76sq.ft.
 Glazed Porcelain
 Stocked in Japan

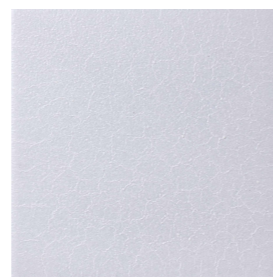
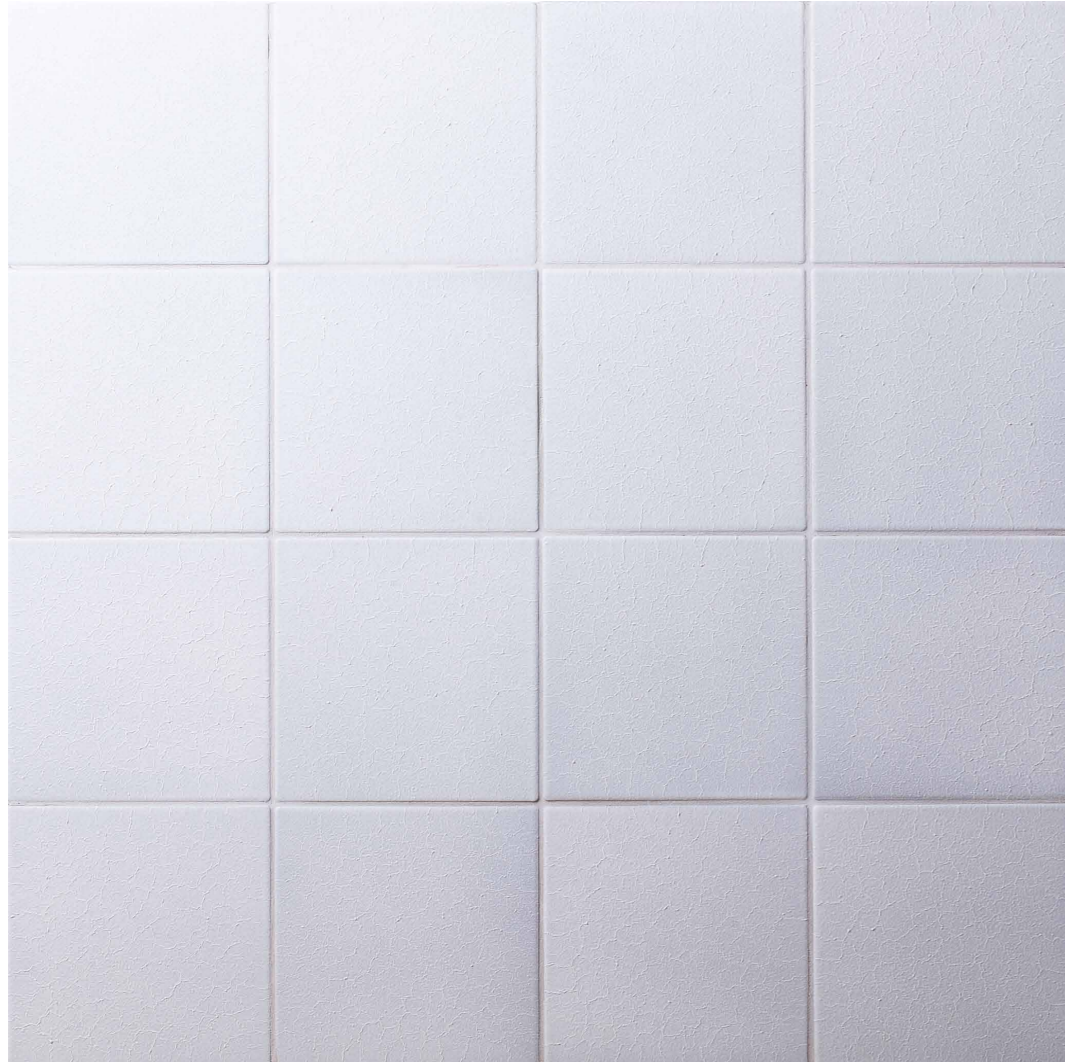


MR-454-R22 MR-454-R29 MR-454-M1 MR-454-M3

Washi

6"x6"(147x147mm)
1 piece = 0.24sq.ft.
Glazed Porcelain
Made-to-Order

WASHI's special glaze recreates the delicate, fibrous texture of traditional Japanese paper. Resistant to tearing, burning, and stains, this durable tile is a truly unique expression of washi.

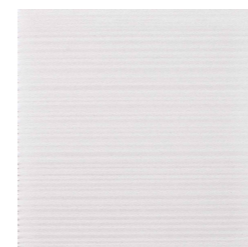
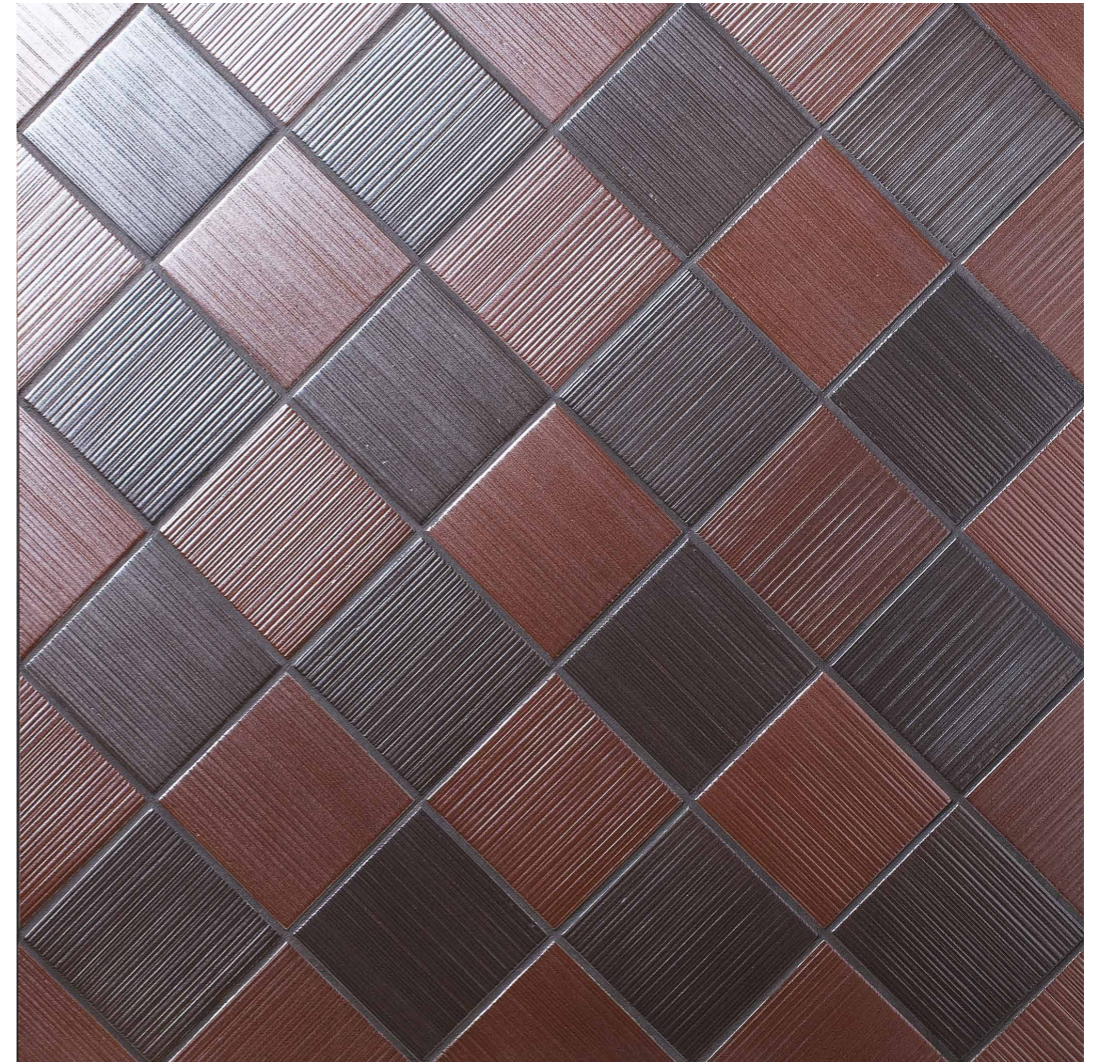


WASH-1

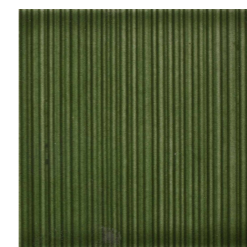
Kimono

3-3/4"x3-3/4" (95x95mm)
1 piece = 0.10sq.ft.
Glazed Porcelain
Made-to-Order

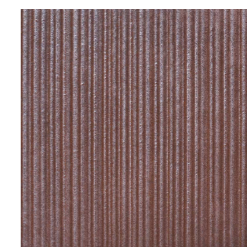
KIMONO reflects woven Japanese fabrics. Its lined surface recalls natural textiles. Arrange in diverse, multi-tone patterns for a quietly dramatic, contemporary appeal.



KIMO-1



KIMO-2



KIMO-3

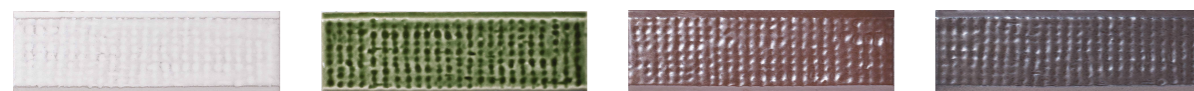
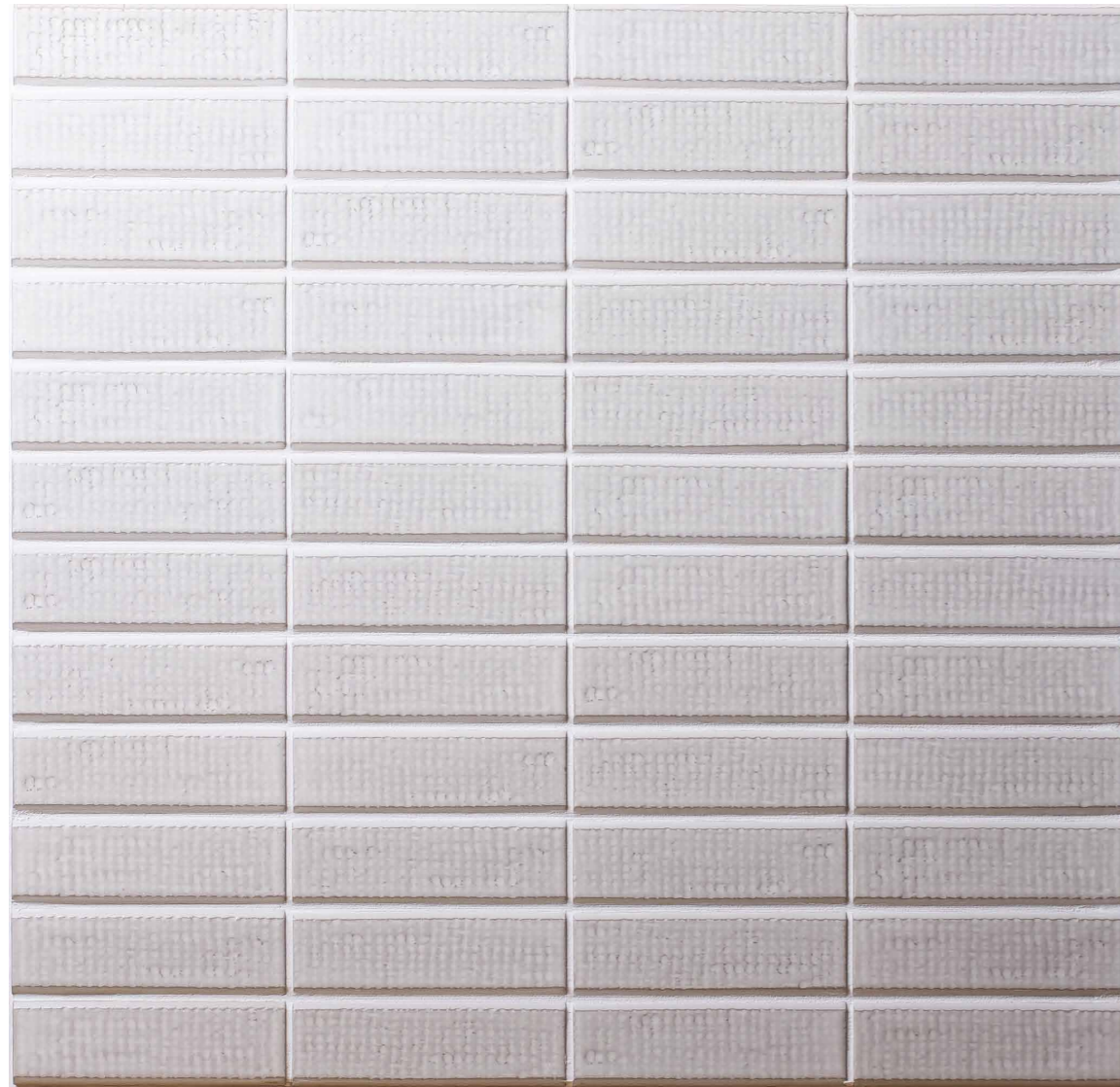


KIMO-4

Ayumi

1-3/4" x 5-3/4" (45 x 145mm)
11-1/4" x 11-3/4" (288 x 296mm)
1 sheet = 0.92sq.ft.
Glazed Porcelain
Made-to-Order

AYUMI features a natural, irregular texture to deliver the varied look currently in demand. Uneven surfaces and tapered edges cast shadows, while rich glazes play with reflected light.



AYUMI-1

AYUMI-2

AYUMI-3

AYUMI-4

Kumi

1-3/4" x 5-3/4" (45 x 145mm)
11-1/4" x 11-3/4" (288 x 296mm)
1 sheet = 0.92sq.ft.
Glazed Porcelain
Made-to-Order

Clean offset lines and subtle depth let KUMI turn geometric restraint into expression. Light reveals a cadence of shadow and relief, while limitless patterns offer design freedom.



KUMI-1

KUMI-2

KUMI-3

KUMI-4

Kushu

KUSHU features complex relief for a unique visual and tactile experience. Rich glazes create intricate valleys of light and dark, delivering the sought-after irregular look.

3/4" x 5-3/4" (20 x 145mm)
 11-1/2" x 11-3/4" (292.5 x 296mm)
 1 sheet = 0.94sq.ft.
 Glazed Porcelain
 Made-to-Order



KUSH-1



KUSH-3



KUSH-2

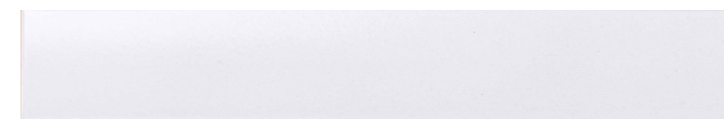


KUSH-4

Concave Border L

CONCAVE BORDER L features a trendy concave surface with 14 exclusive Maruman colors. From bold solids to marbled glazes, it suits any space. Custom colors are also available.

1-3/4" x 11-1/2" (46.5 x 295mm)
 1 piece = 0.15sq.ft.
 Glazed Porcelain
 Made-to-Order



CBL-1



CBL-2



CBL-3



CBL-4



CBL-5



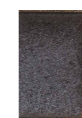
CBL-6



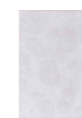
CBL-7



CBL-8



CBL-9



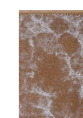
CBL-10



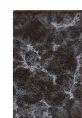
CBL-11



CBL-12



CBL-13

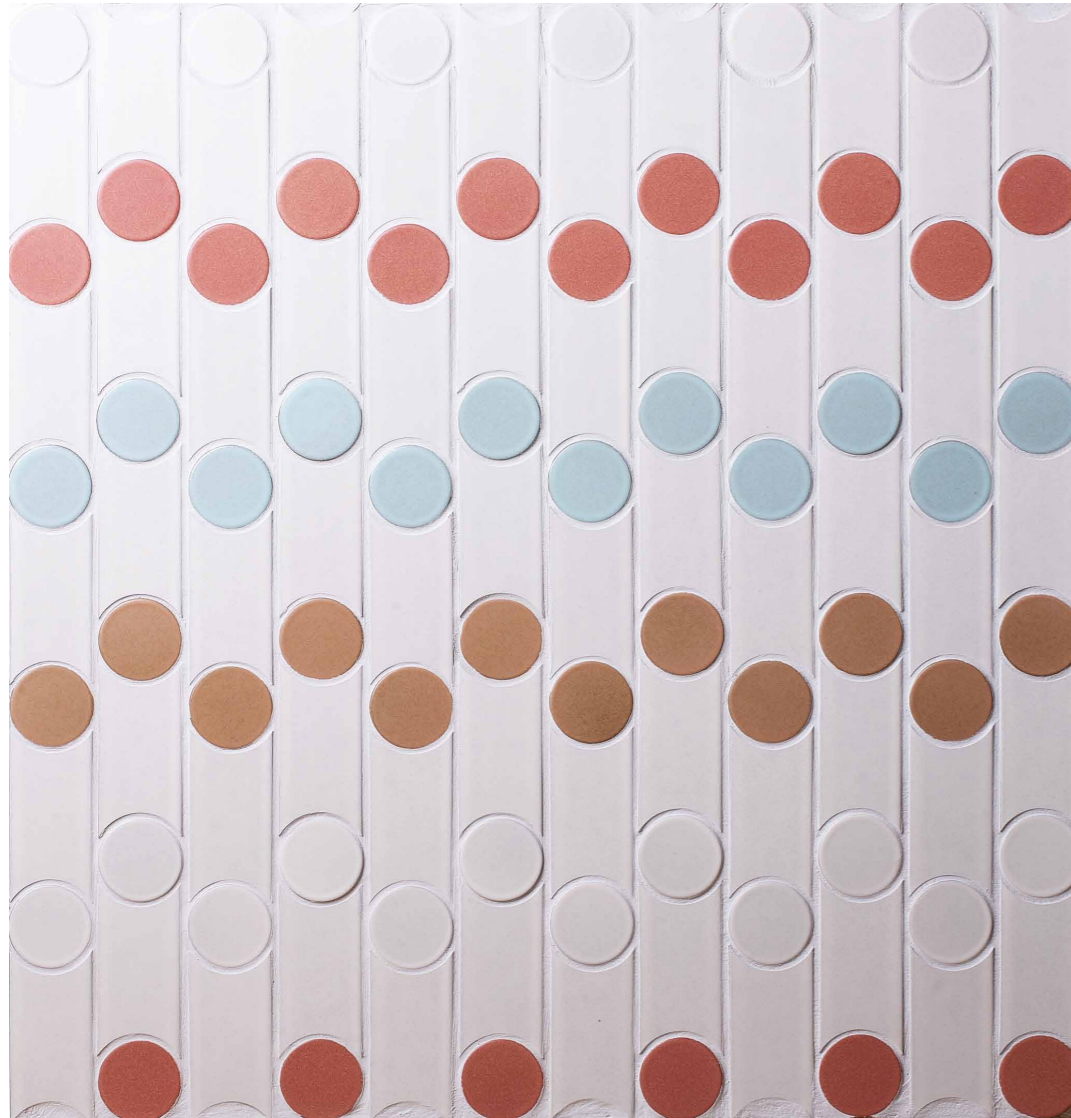


CBL-14

Tanoshi

1-3/4" Round+1-3/4"x4"
(45mm Round+45x98mm)
11-1/4"x10" (288x250mm)
1 sheet = 0.78sq.ft.
Glazed Porcelain
Prototype

TANOSHI is a fun, pop-inspired design of round and original shapes. Currently a prototype, it allows for custom glazes to create whimsical, serious, or elegant looks.



TANO-1



TANO-2



TANO-3

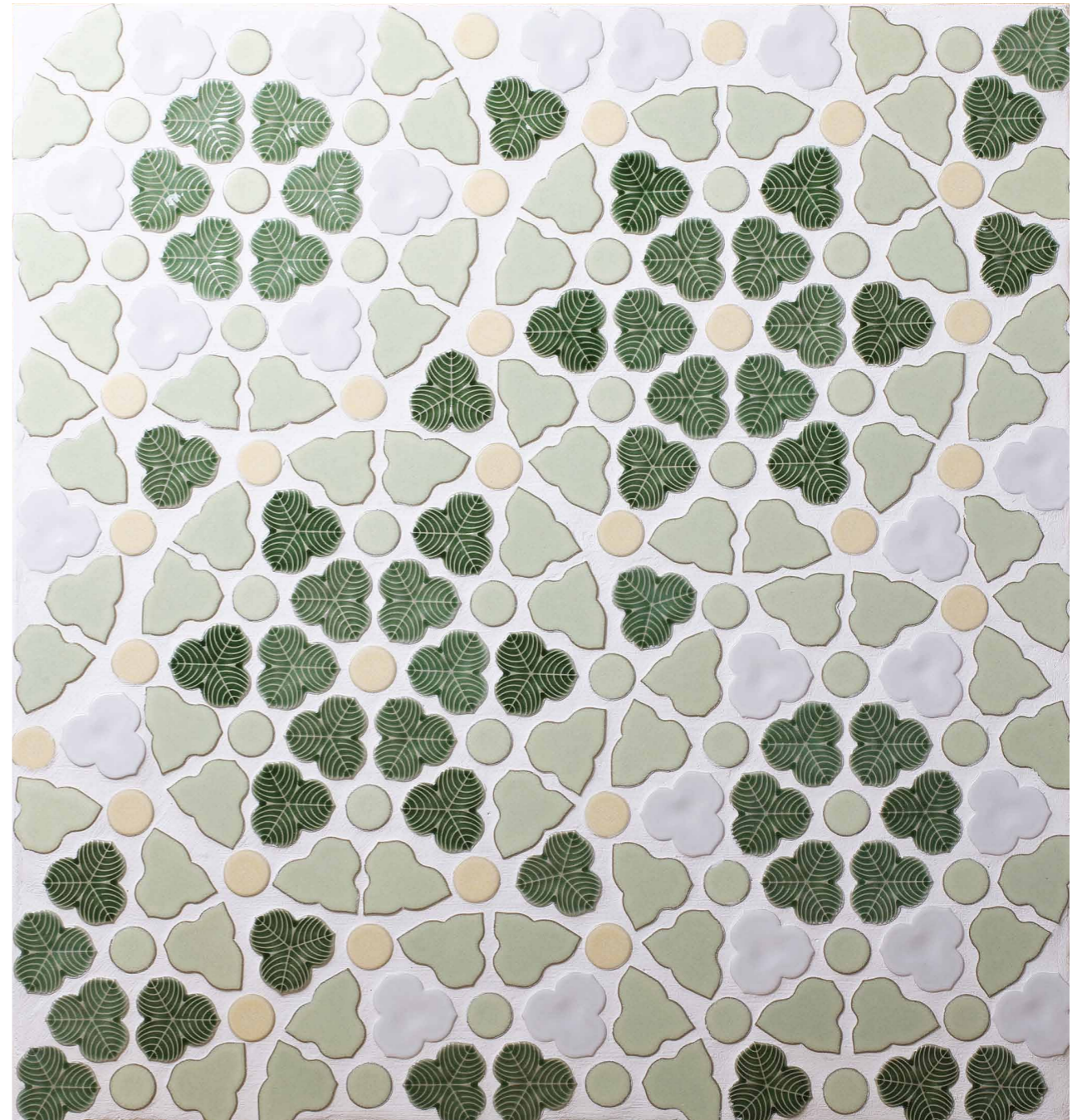


TANO-4

Bouquet

Made-to-Order

BOUQUET is a true display of Japan's beautiful mosaic tiles mounted in sheets for simple installation. Multiple natural shapes are combined to create a design that is both charming and distinctive. Bouquet is a breathtaking demonstration of what can be done with Japan's infinite selection of small mosaic tiles.



Deco Wall Leaf

DECO WALL LEAF is a 3D artistic design. Applied in three distinct patterns, it creates a breathtaking visual space unlike any other.

2"x4" (48x100mm)
1 piece = 0.06sq.ft.
Glazed Stoneware
Stocked in Japan



No.750-W



No.750-I



No.750-R

Butterfly

BUTTERFLY is a unique and vibrant, 3D winged artistic tile in two unglazed colors. It brings spaces to life, adding a sense of greater depth, warmth, and visual impact.

3-3/4"x4-1/2" (95x115mm)
1 piece = 0.12sq.ft.
Unglazed Stoneware
Stocked in Japan



No.BF-W

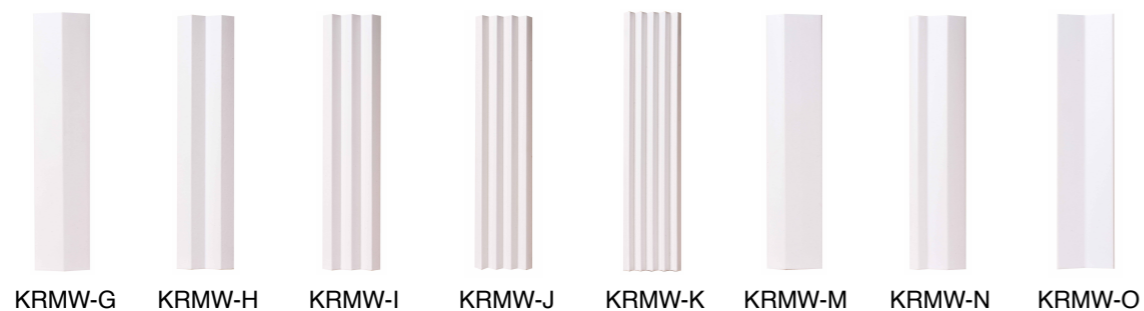
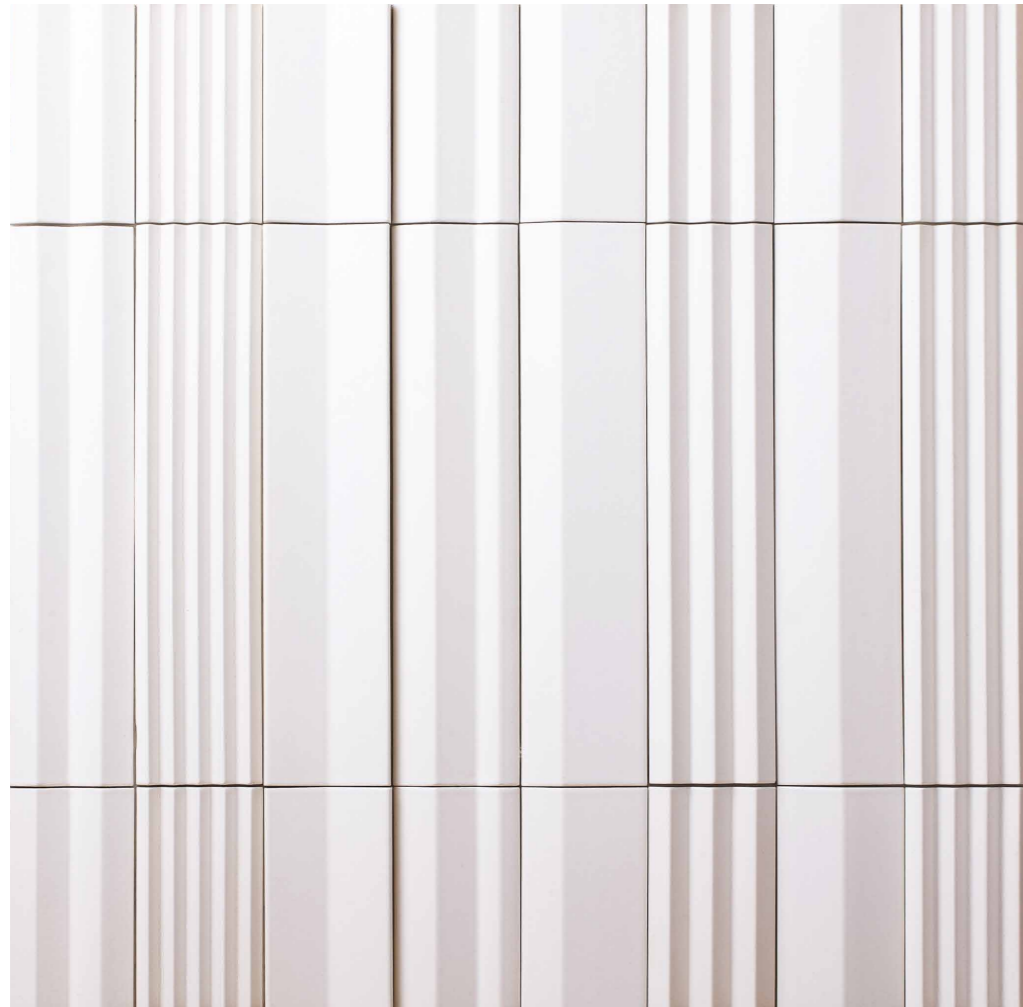


No.BF-H

K-relief model

K-Relief is a bold 3D tile in dynamic shapes. It transforms any space into a majestic work of art, evoking elegant architectural pillars or curtains.

3" x 13" (75 x 333mm)
1 piece = 0.27sq.ft.
Glazed Stoneware
Stocked in Japan



BR model No.731

It's a masterfully designed 3D convex elongated form. The surface is rough and pleasing to the eye and touch, creating a bold installation with a softening character.

1-1/2" x 13" (40 x 333mm)
1 piece = 0.24sq.ft.
Unglazed Stoneware
Stocked in Japan



No.731-H



100% MADE IN JAPAN



MARUMAN